



WESTCAR s.r.l.

BRAKES

Code 17491

BD Drum Brakes **CD Disc Brakes**



APPLICATIONS

- Brake for lifting service
- Brake for translater service
- Safety brake
- Emergency brake

TECHNICAL FEATURES

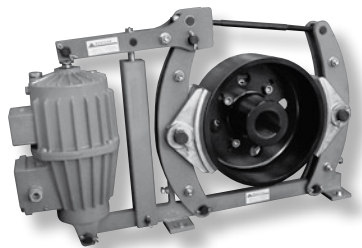
- Welded steel frame in according to DIN 15435 (drum brakes) zinc coated steel frame (disc brake)
- Epoxy resin painting (2 coatings) with RAL 5010 final color
- Manganese phosphated pins (drum brakes), stainless steel pins (disc brakes)
- Light alloy drums with asbestos free glued braking pads (drum brakes)
- Friction coefficient $\mu=0,42$
- Asbestos free lining pads, glued to easy-to-replace plates (disc brakes).
- Braking torque scale indicator
- Protection grade IP 56

OPERATION

- WC Drum and disc brake are negative
- The braking force is obtained by means of a spring that, through a suitable system of levers, transmits its amplified action to the braking pads.
- An electrohydraulic or pneumatic thruster makes an opposite force to the spring, causing the pads open, therefore the brake to release.
- The braking force of the linings against the drum can be modulated by adjusting the spring.
- Braking torque changes depending on braking force modulation.

THRUSTOR TYPES

- **WC** Electrohydraulic WESTCAR (standard)
- **ET** Electrohydraulic ELTMA
- **ED** Electrohydraulic ELDRO
- Pneumatic



Tab. A

Brake Series BD	THRUSTOR MAXIMUM BRAKE TORQUE Nm						
	WC 22/50	WC 30/50	WC 60/50	WC 75/50	WC 80/60	WC 200/60	WC 300/60
160	120						
200	160	240	-	-	-		
250	210	320	500			-	
315	250	350	700	1.000	1.120		-
400		500	870	1.250	2.100		
500	-		1.100	1.600	2.700	4.400	
630			-	-	3.270	5.400	7.800

ABBREVIATION OF DRUM AND DISC BRAKES

- **RG** Automatic wear compensation device
- **FCU** Maximum wear indicator
- **FCA** Open brake indicator
- **LSM** Manual disengagement lever.
- **SV** Adjustable delay valve
- Protection grade IP 65
- Stainless steel pins instead of phosphated pins (drum brakes)
- Braking drums 50% wider (drum brakes)

BRAKE SELECTION DATA

- Type of application.
- Stop for hour
- Required voltage (standard 220/440V-50Hz)
- Accessori richiesti
- Diametro e larghezza fascia freno
- Diametro disco. Spessore standard 30mm.
- Air pressure supply (In case of pneumatic actuator)

Drum brakes only

- L special large drums
- INOX stainless steel pins

Disc brakes only

- DX rasecuzione destra
- DS left hand execution

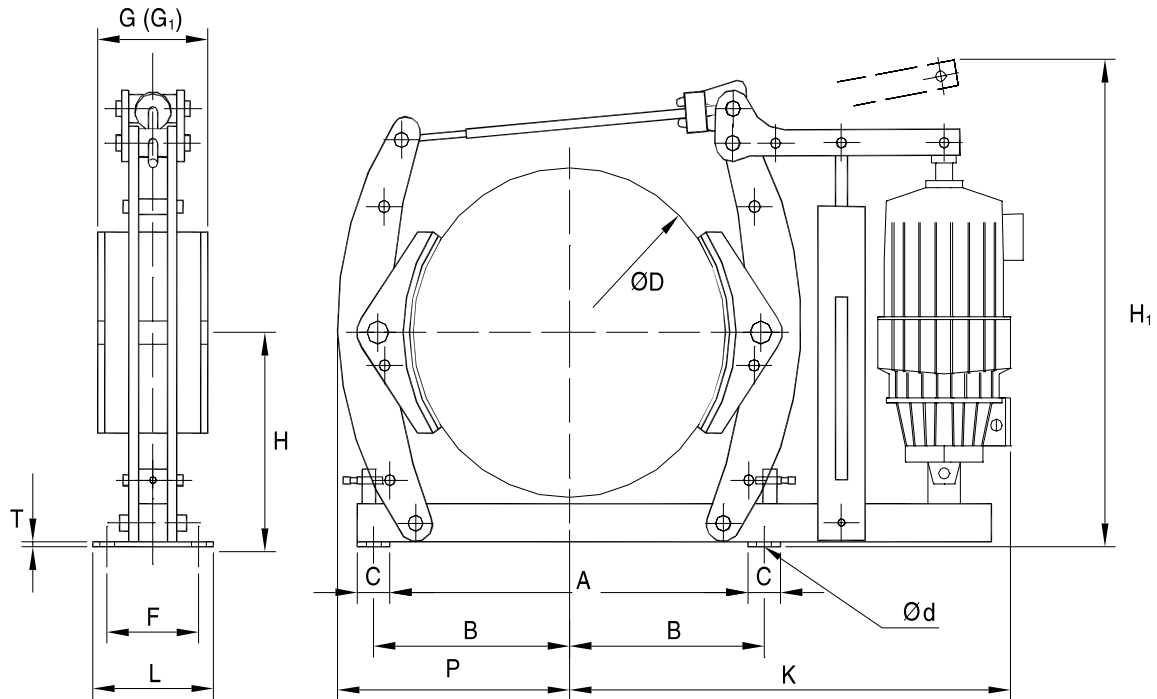
QUICK SELECTION TABLES

- **TAB A** Drum Brake
- **TAB B** Disc Brake

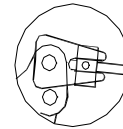


Tab. B

Brake Series CD	Disc Dia. mm	THRUSTOR MAXIMUM BRAKE TORQUE Nm					
		WC 22/50	WC 30/50	WC 60/50	WC 80/60	WC 200/60	WC 300/60
DS 0	250	195	265				
	315	250	340				
	400	330	450				
	450	380	520				
	500	430	530				
DS 1	355	290	435	870			
	400	340	490	980			
	450	390	530	1060			
	500	440	575	1150			
DS 2	450			1350	2700	4500	
	500			1500	3000	5000	
	560			1700	3400	5700	
	630			1850	3700	6200	
	710			2100	4200	7000	
DS 3	630				3900	6500	9750
	710				4410	7350	11000
	800				5050	8500	12750
	1000				6300	10500	15750
	1250				7700	12800	19000



AUTOMATIC WEAR
COMPENSATION DEVICE



Series BD	Thruster WC	Dimensions mm														Brake Weight Kg	Total Weight Kg			
		D	A	B	C	Nr	d		G	G ₁	H	H ₁ max	K	L	P			T		
							Ø	F												
160	22/50	160	200	120	40	4	12	50	55	-	130	376	362	80	140	10	9	16		
200		200	250	145			14	55	70	105	160	471	443	92	165		11	18		
200	30/50	250	310	180	50		18	65	90	135	190	517	453	110	207	12	25	30		
250	60/50																		516	32
315	22/50																		315	380
315	30/50	566	41																	
400	60/50	574	43																	
400	75/50	595	36	50																
400	80/60.2	400	480	270	60		22	100	140	210	280	600	669	150	312	15	60			
500	30/50												688				62			
500	60/50												693				69			
500	75/50												712				93			
500	80/60.2	500	586	325	60	22	130	180	270	340	800	723	180	400	15	96				
500	200/60											712				100				
630	80/60.2											723				122				
630	200/60	630	700	400	100	27	170	225	335	420	888	903	250	475	20	143				
630	300/60															122	165			
																	167			

G₁ Increased with brake drum

Dimensions are subject alteration without notice